

*Nanofibers recover more
overspray powder for cleaner air*

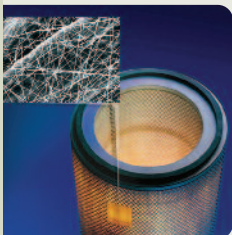


Advanced Nanofiber Filtration Technology for Powder Coating



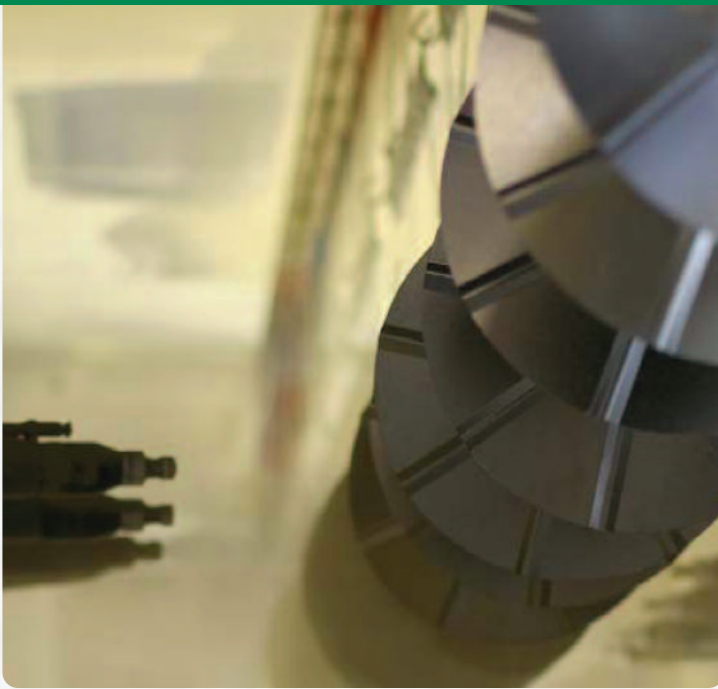
Designed specifically for powder-coating applications, ProTura® Advanced Nanofiber Filtration increases the effectiveness of your powder-paint recovery system.

Manufactured with the industry's smallest fibers and the highest available filter efficiency rating — **MERV 15** — ProTura nanofiber filters are the best-cleaning filter cartridges you can specify. And cleaner air means a safer, more productive worker environment.



*ProTura® nanofiber filtration technology
shown at a magnification of 5,000x.*

ProTura filters are also more cost effective in the long term. Their surface-loading performance, in addition to capturing overspray more effectively than standard depth-loading cartridges, offers superior release characteristics during pulse-cleaning cycles. This reduces downtime and disposal costs and extends filter life. For ProTura specifications for your powder-paint recovery systems, contact Clark Filter at **800-73CLARK**.



ProTura® nanofiber technology outperforms standard cartridges

ProTura® nanofiber media and pleated cartridge elements outperform standard filtration technology to increase the performance of your recovery system. Here's why:

- **Fibers are up to 50% smaller** than competitive fibers for maximum filtration
- **MERV 15 efficiency rating** – highest of any standard cartridge filters. Higher MERV rating means higher filter efficiency and greater ability to remove powder paint from the air
- **Surface-loading performance** – nano-size interfiber pores allow powder paint to easily pulse off the surface layer while the media remains clean. This results in higher cleaning efficiency and savings in compressed air costs
- **Longer filter life** – less pulse cleaning and filter stress result in lower filter replacement costs and reduced downtime (depth-loading filters need intensive cleaning and, as a result, are subjected to continual abrasion and mechanical fatigue)
- **Lower initial pressure drop over the life of the filter and less energy use**



Adding Value Beyond Expectations

3649 Hempland Road | Lancaster, PA 17601-1393 | **Toll-Free: 800-73CLARK** | F: 717-285-9241 | www.clarkfilter.com